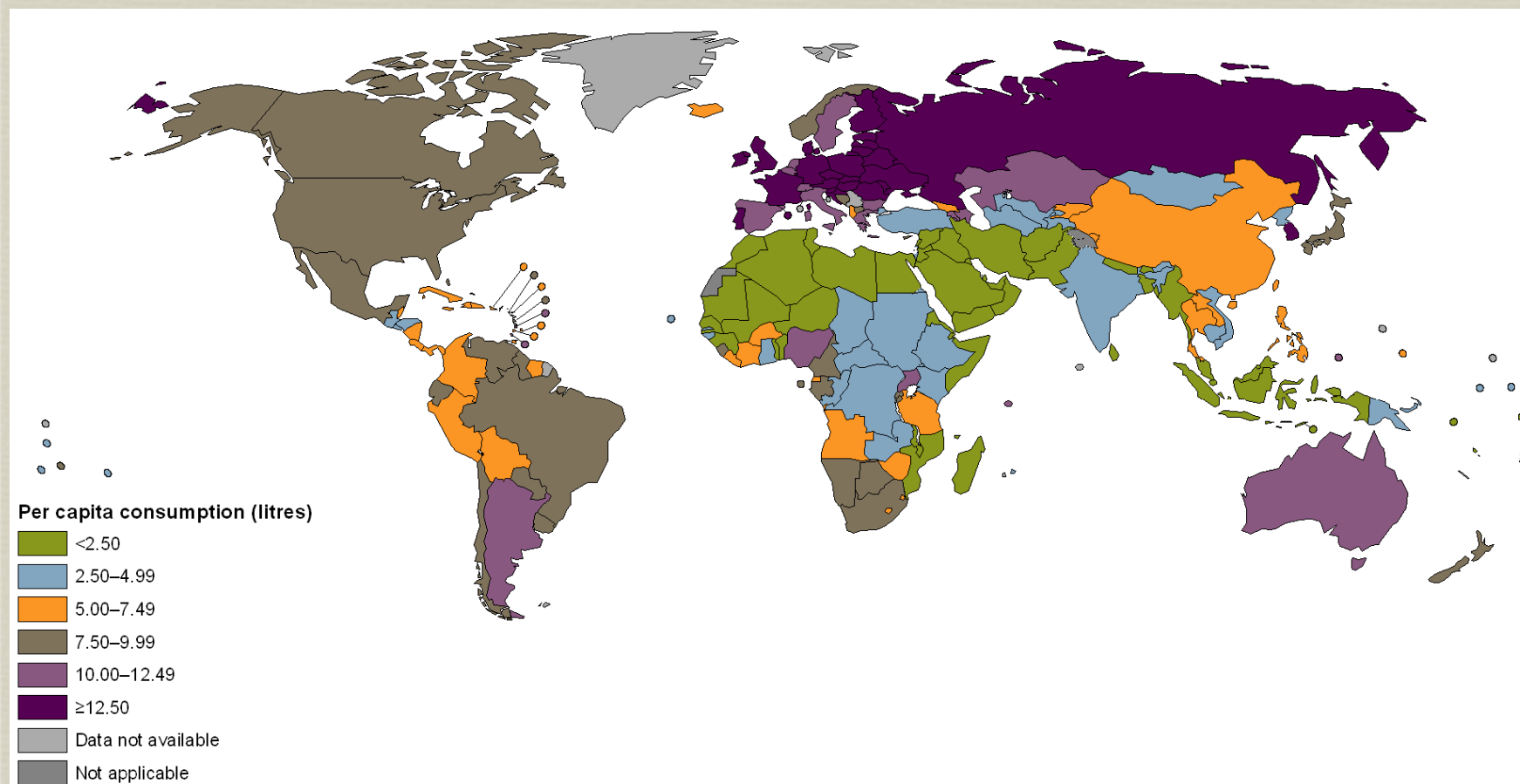


Impact of  
contributory factors  
such as alcohol  
dependence on mental  
illnesses

[geert.dom@ua.ac.be](mailto:geert.dom@ua.ac.be)

## Total adult per capita alcohol consumption (recorded and unrecorded) in 2005\*

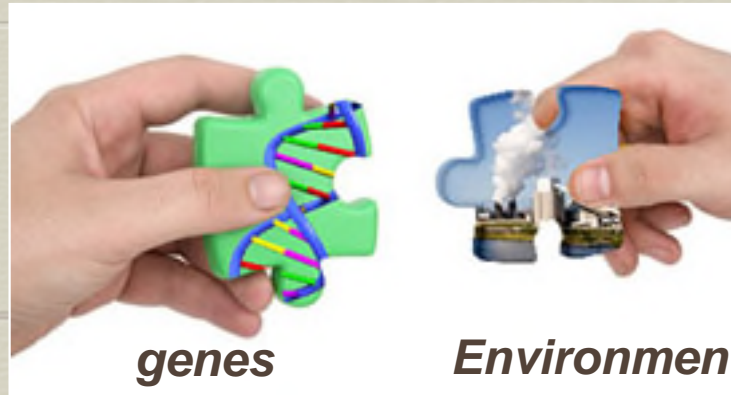


Total refers to recorded + unrecorded;  
2005 refers to average 2003–2005 for recorded and 2005 for unrecorded



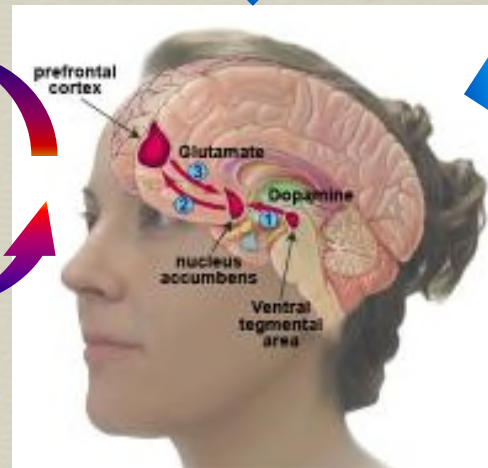


*Age onset first intoxications*



*genes*

*Environment: Stress – ECA - availability)*



*Brain circuitries*

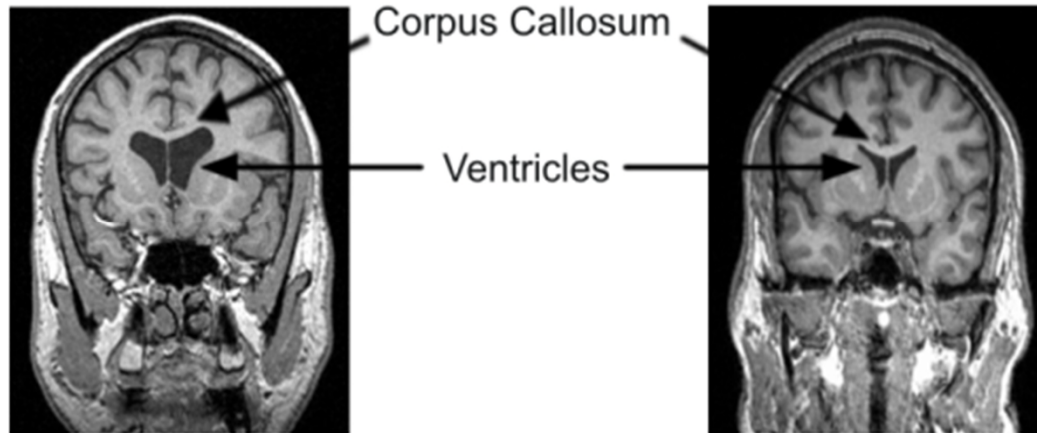
**Alcohol Use disorder**

**Psychiatric disorders**

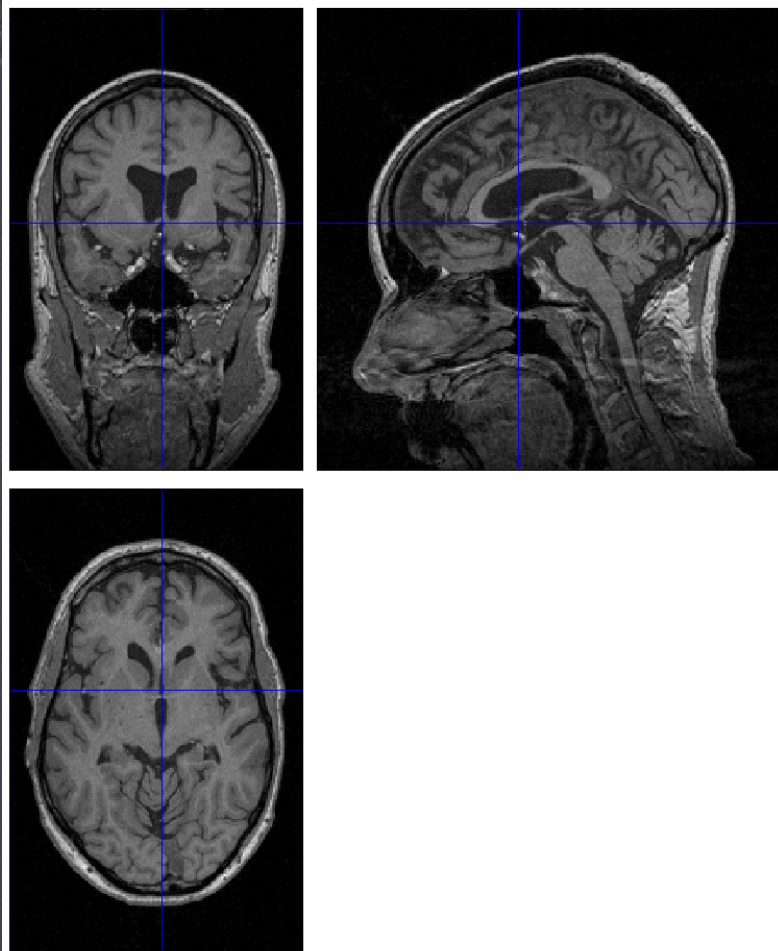


alcoholic man (33y)

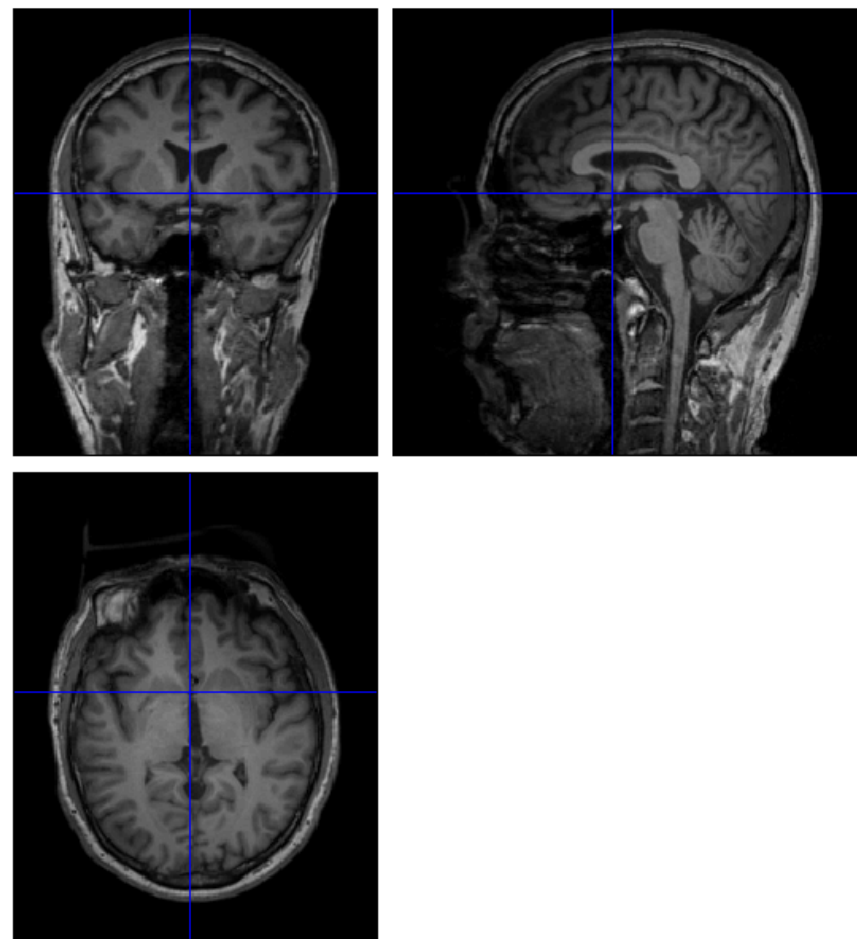
control man (31y)







alcohol-dependent  
male  
42 years old



healthy  
male  
43 years old

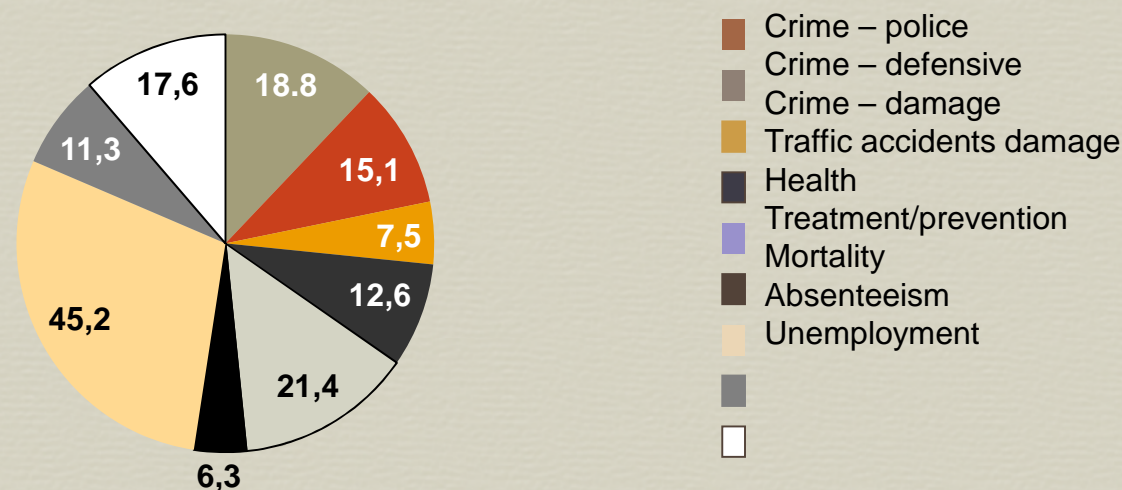
# Alcohol dependence in the EU

---

- ↪ 5.4% of men age 18–64 and 1.5% of women in this age category are estimated to be affected by alcohol dependence
- ↪ This corresponds to almost 11 million people
- ↪ Over all age categories, the prevalence is estimated to be 4.8% for men, 1.3% for women and about 12 million people in the EU



## Social costs of alcohol in the EU, 2010 (billion €)



Alcohol Comparator Report based on Anderson & Baumberg, Alcohol in Europe, 2006: total tangible costs to the EU €155.8 billion (lower limit: €107.9 billion; upper limit: €287.7 billion) in 2010, equivalent to 1.3% of GDP (0.9–2.4%)